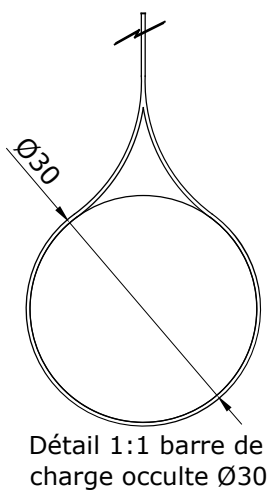
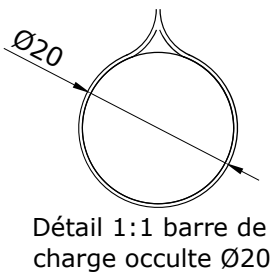
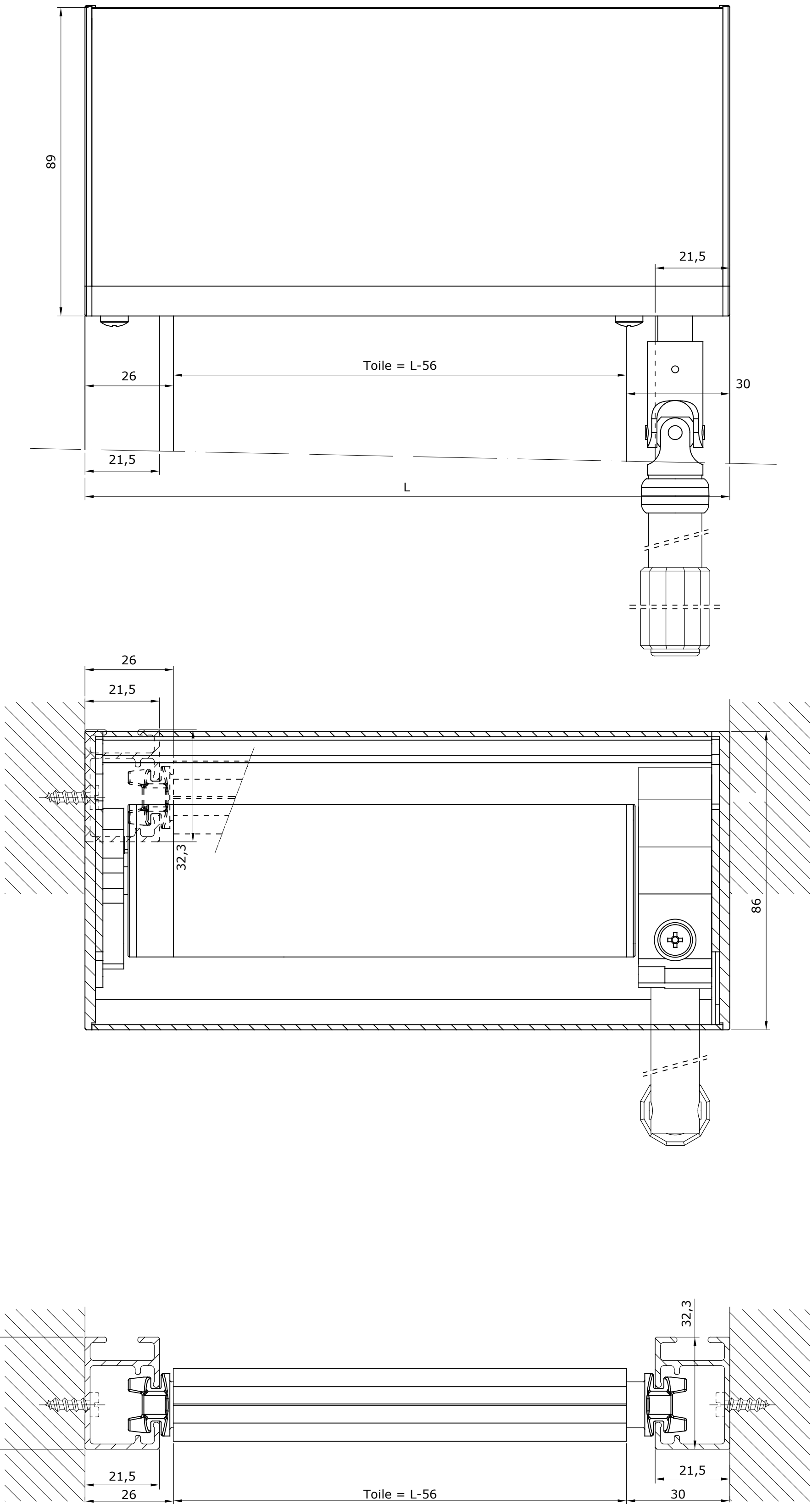
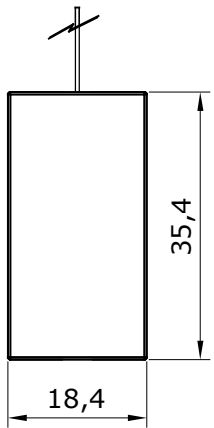
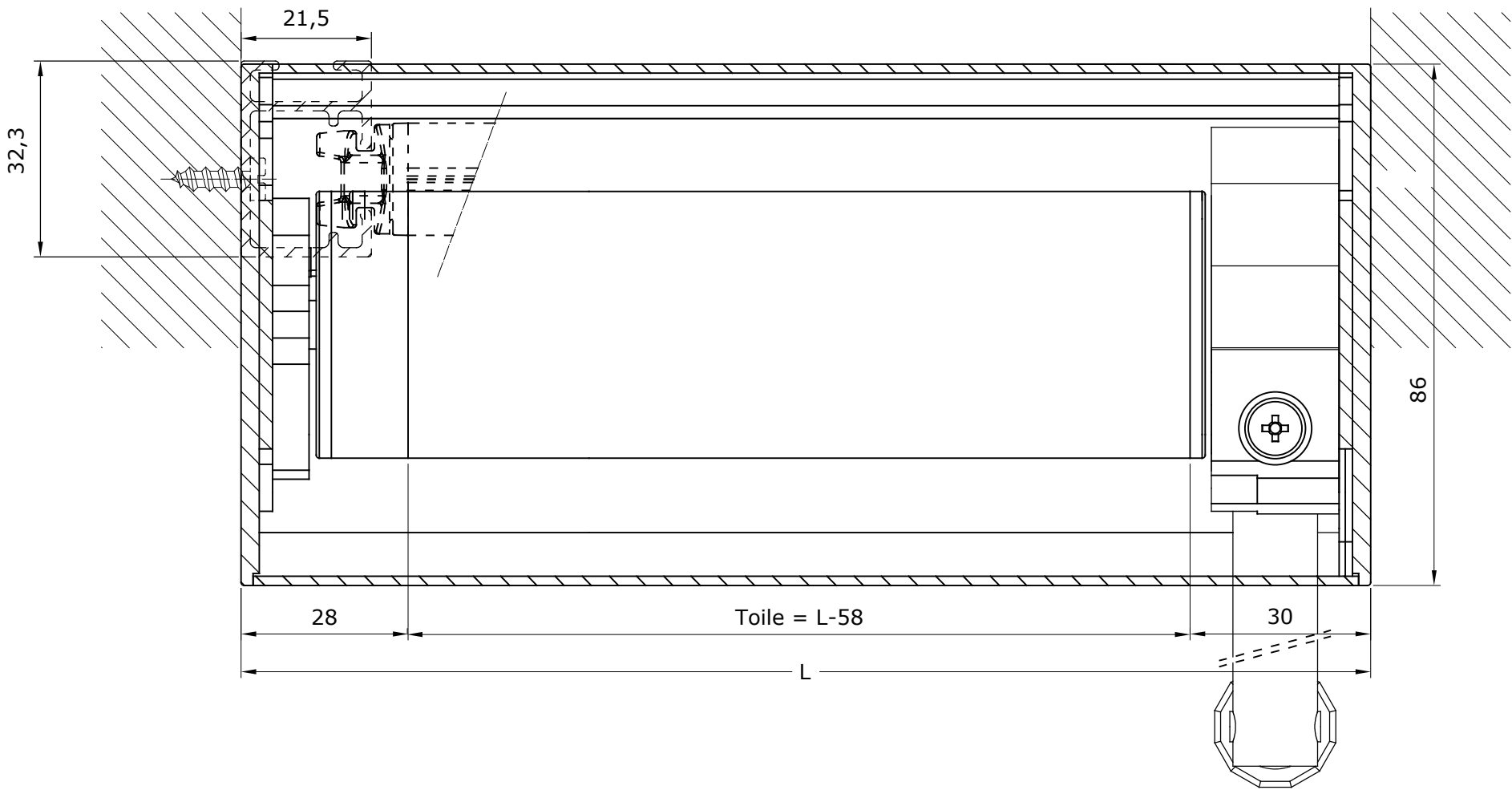
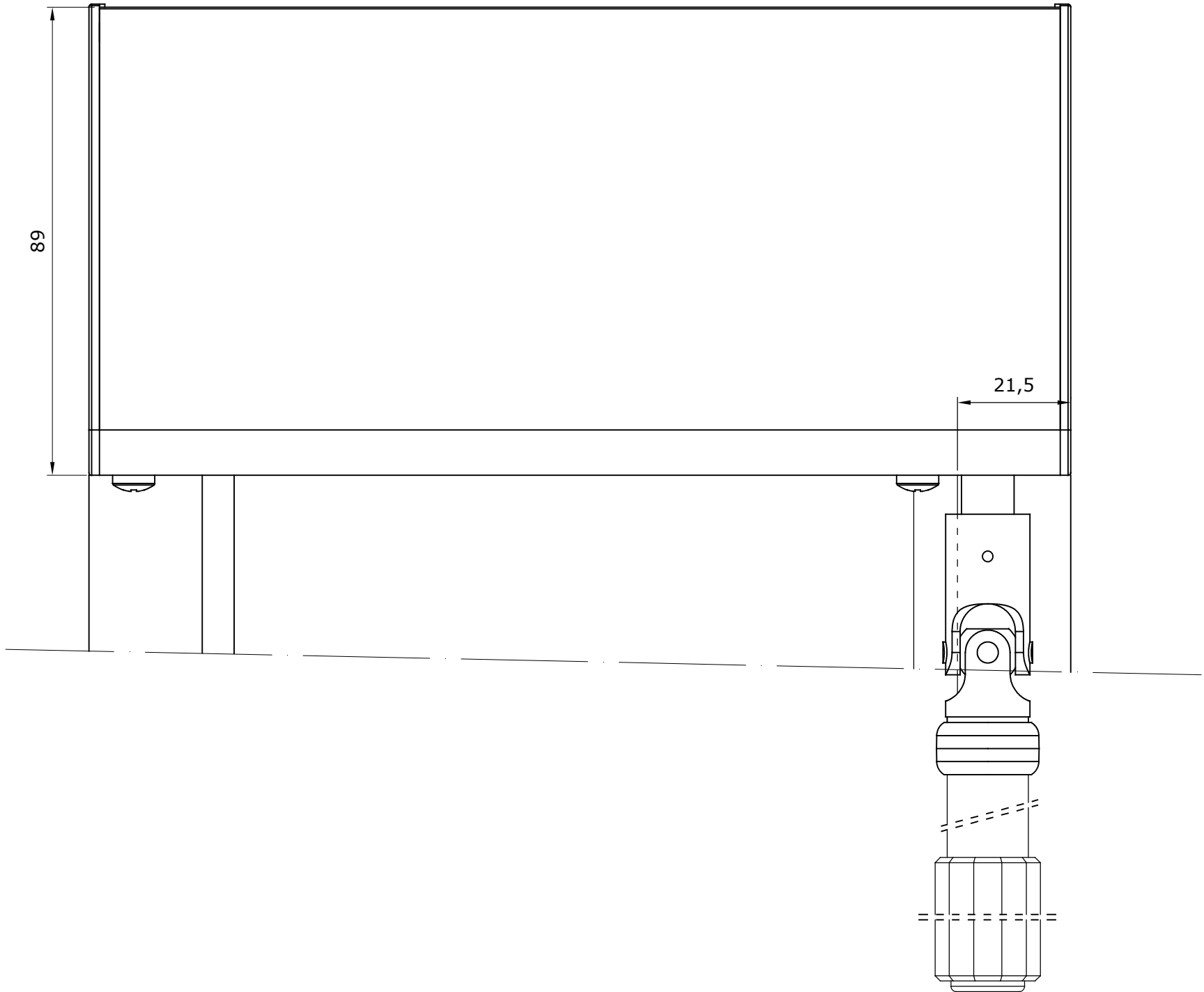


F. REVIS.		BANDALUX	
REVISION	1 2 3 4 5 6 7 8 9		
DATE	29-06-2017	PLAN N°	
DESSIN	Antonio F.	FORMAT	A-4
ECHELLE	Store enrouleur avec coffre B-Box 85 manivelle coulisses U-402 Installation laterale Mécanisme: Manivelle Barre de charge: Occulte de Ø20mm Tube Ø44mm		
1/1			



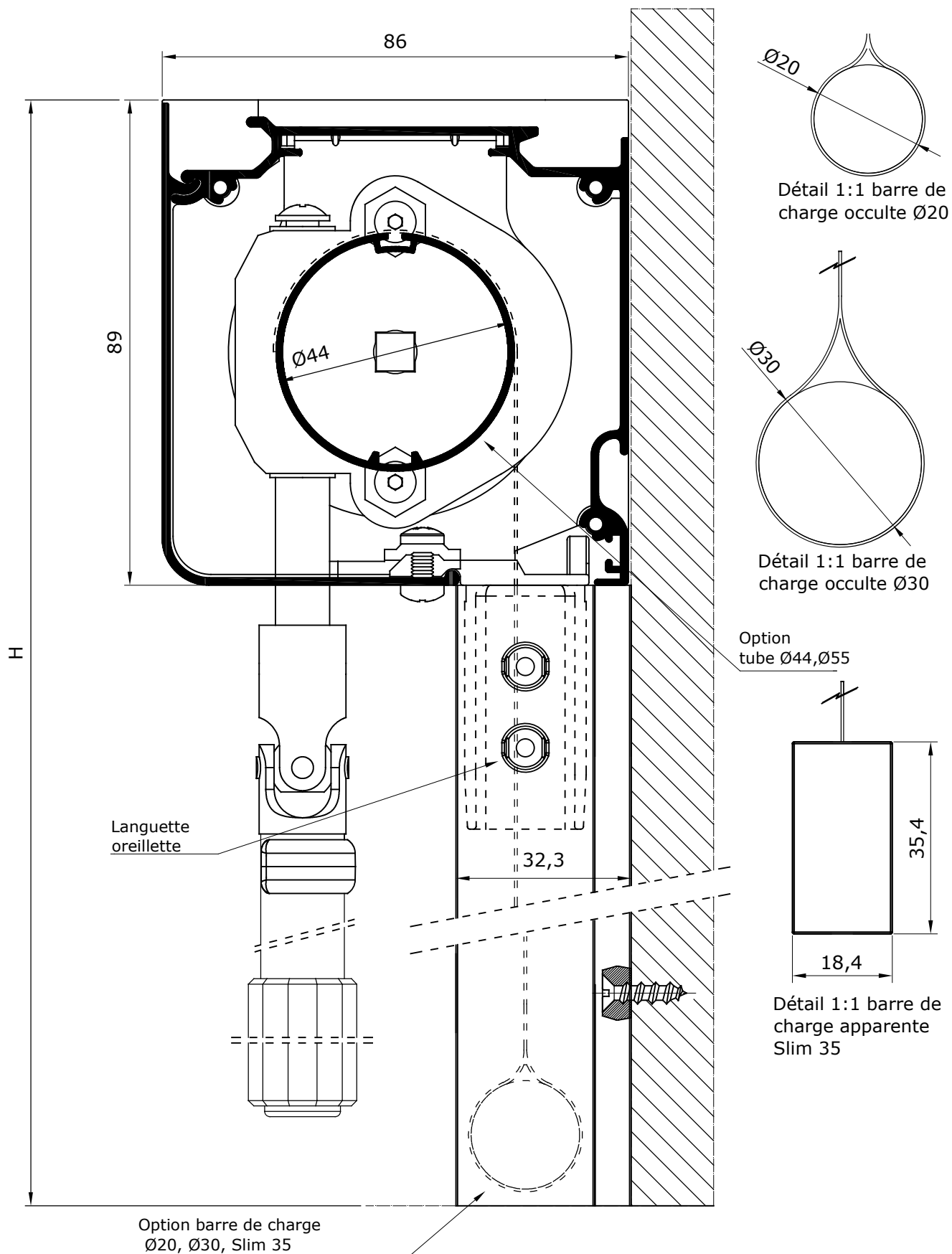
F. REVIS.		BANDALUX	
REVISION	123456789		
DATE	29-06-2017	PLAN N°	
DESSIN	Antonio F.	FORMAT	A-2
ECHELLE	Store enrouleur avec coffre B-Box 85 manivelle coulisses U-402 Installation laterale Mécanisme: Manivelle Barre de charge: Occulte de $\varnothing 20$ mm Tube $\varnothing 44$ mm		
1/1			



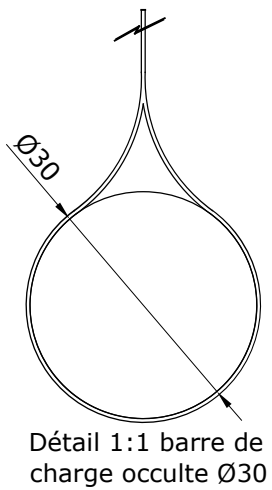
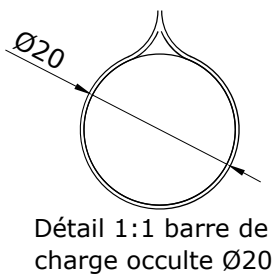
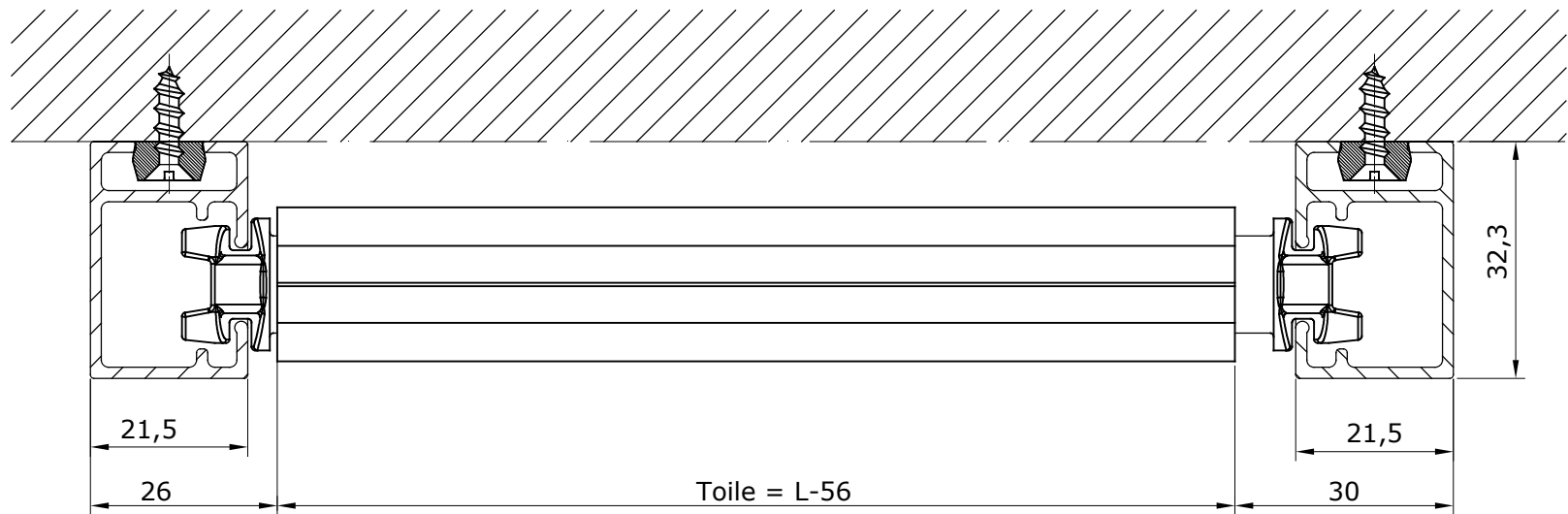
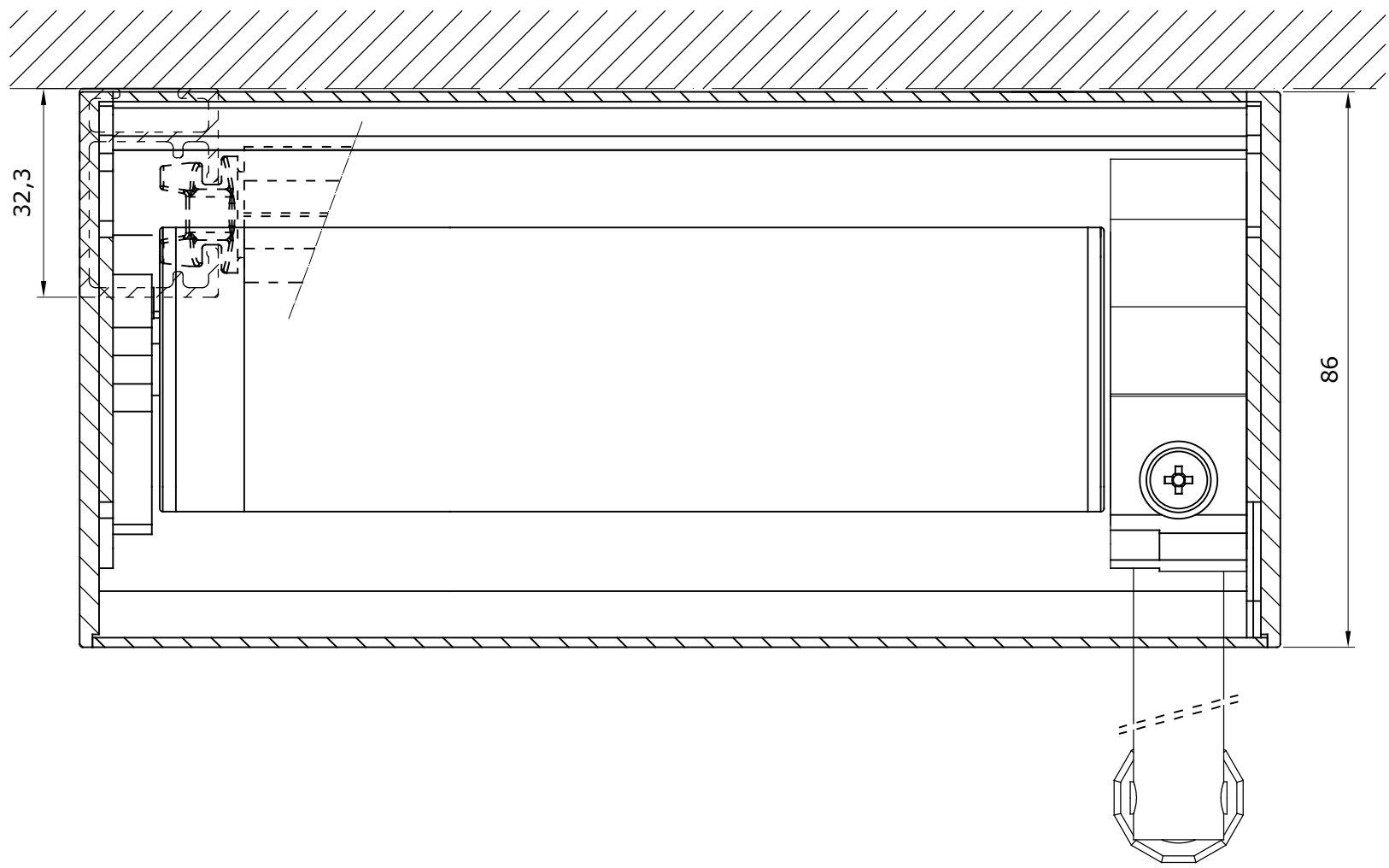
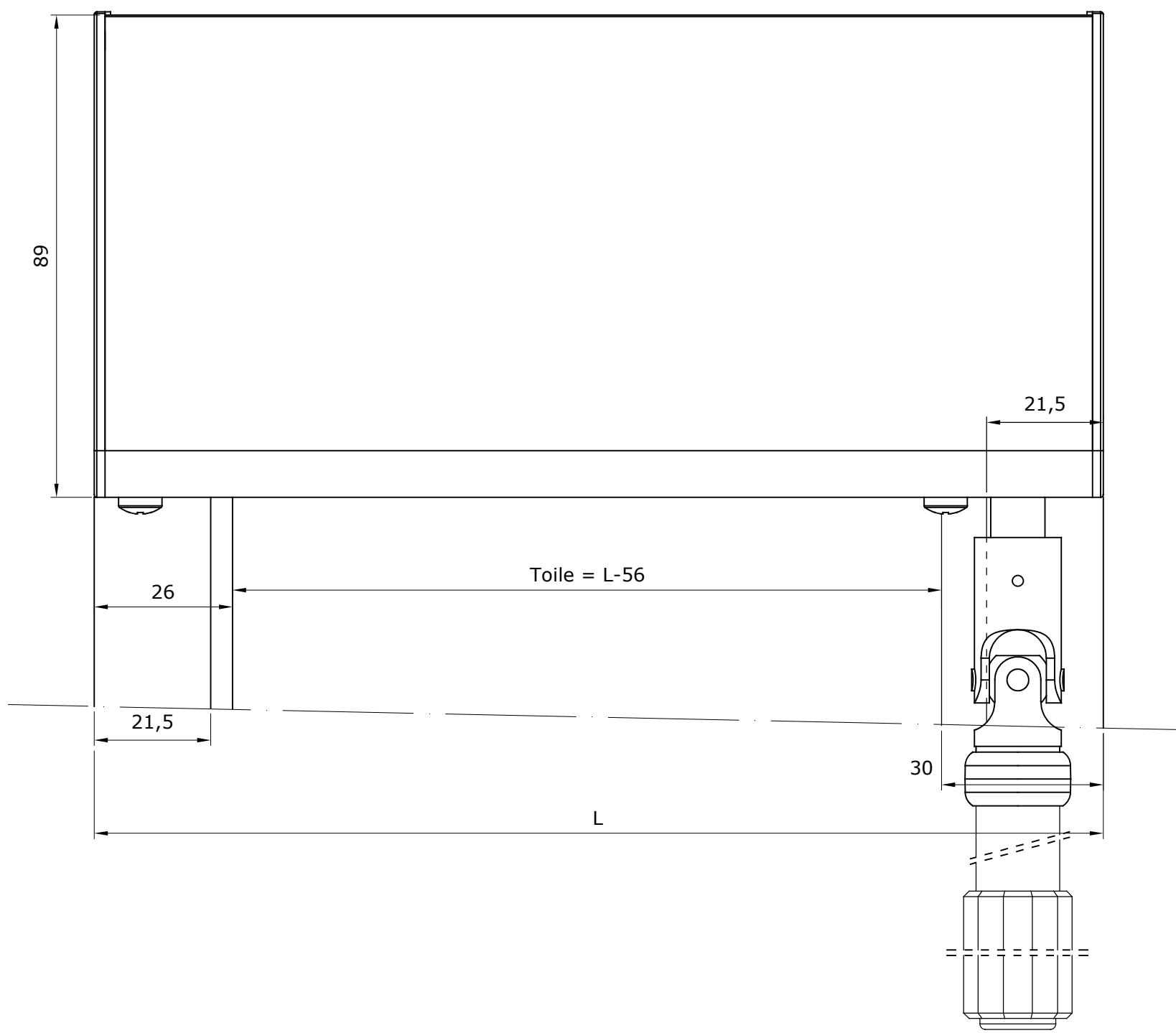
Détail 1:1 barre de charge apparente Slim 35

F. REVIS.			
REVISION	[1][2][3][4][5][6][7][8][9]		
DATE	29-06-2017	PLAN N°	
DESSIN	Antonio F.	FORMAT	A-2
ECHELLE	Store enrouleur avec coffre B-Box 85 manivelle coulisses U-402 Installation laterale Mécanisme: Manivelle Barre de charge: Slim 35 Tube Ø44mm		
1/1			

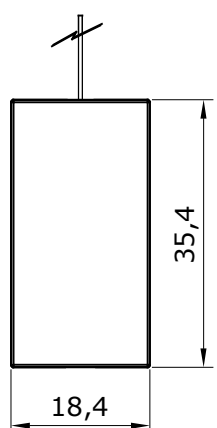
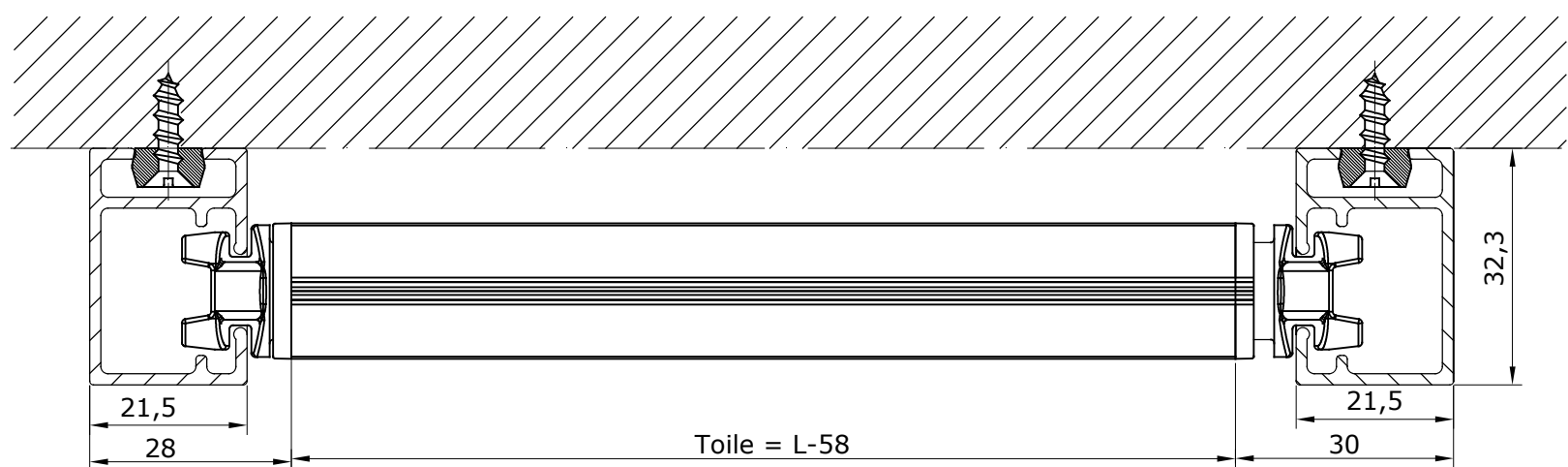
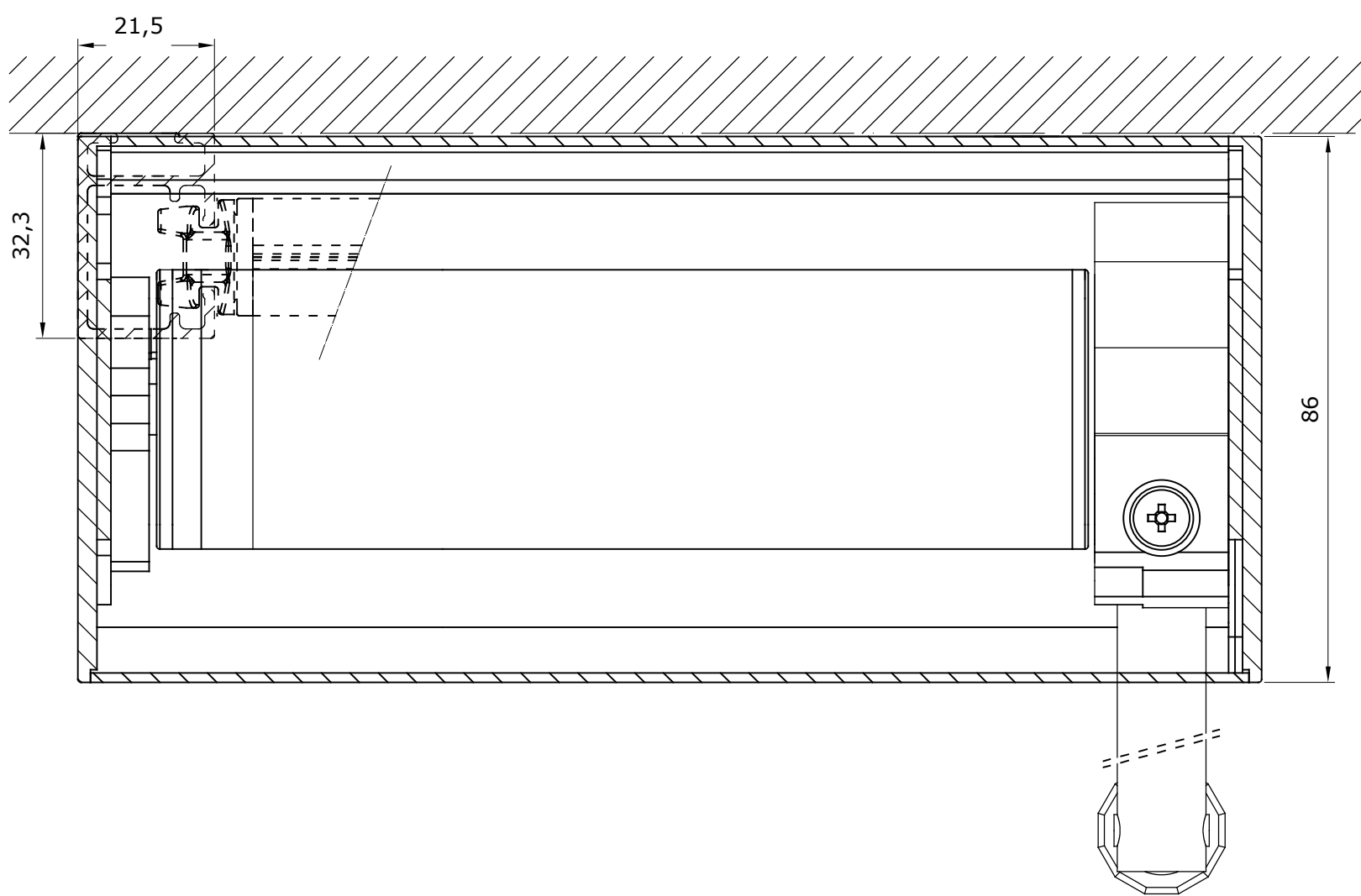
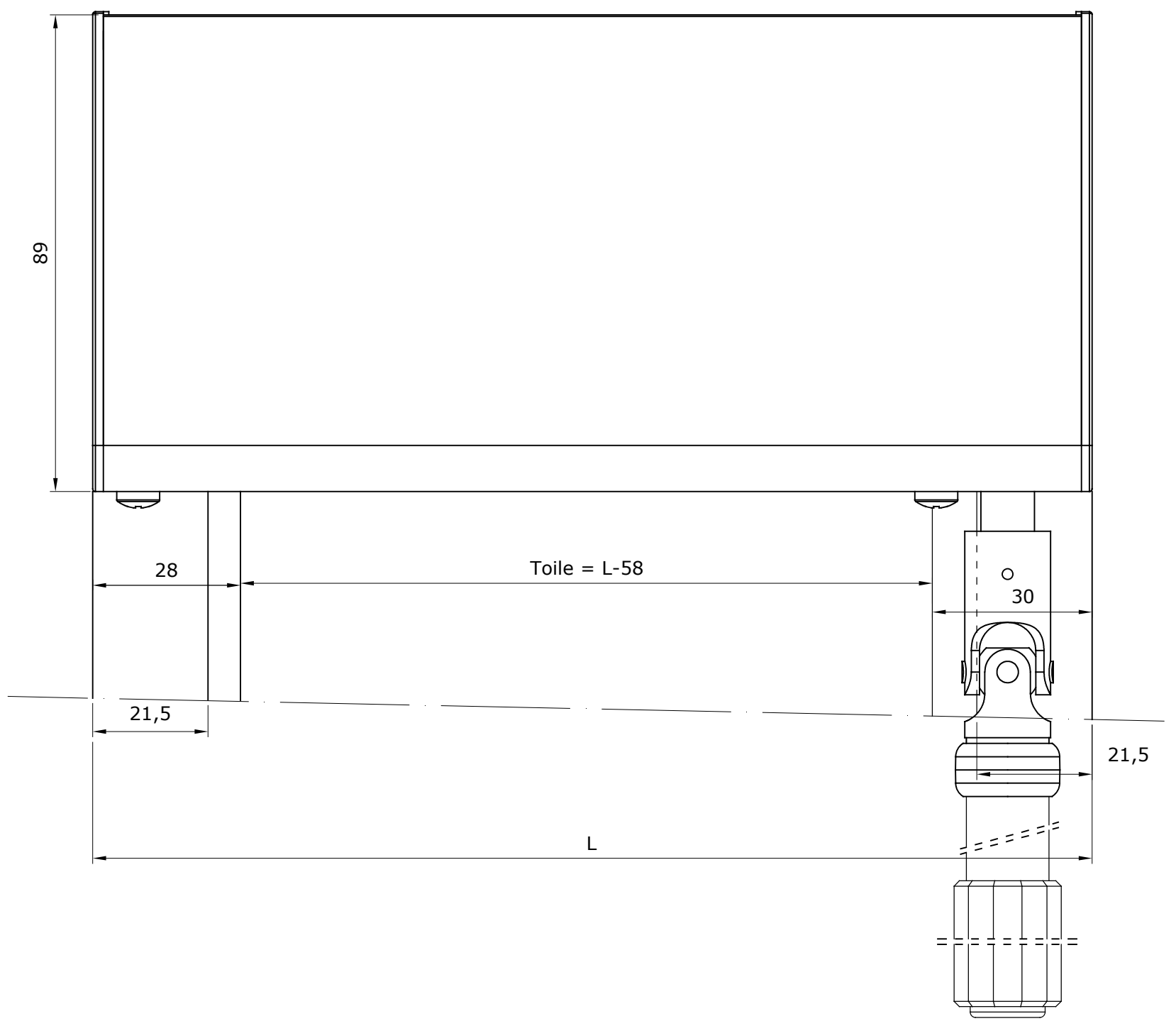
BANDALUX



F. REVIS.		BANDALUX	
REVISION	1 2 3 4 5 6 7 8 9		
DATE	29-06-2017	PLAN N°	
DESSIN	Antonio F.	FORMAT	A-4
ECHELLE	Store enrouleur avec coffre B-Box 85 manivelle coulisses U-402 Installation frontale Mécanisme: Manivelle Barre de charge: Occulte de Ø20mm Tube Ø44mm		
1/1			



F. REVIS.		BANDALUX	
REVISION	123456789		
DATE	29-06-2017	PLAN N°	
DESSIN	Antonio F.	FORMAT	A-2
ECHELLE	Store enrouleur avec coffre B-Box 85 manivelle coulisses U-402 Installation frontale Mécanisme: Manivelle Barre de charge: Occulte de Ø20mm Tube Ø44mm		
1/1			



Détail 1:1 barre de charge apparente Slim 35

F. REVIS.		BANDALUX	
REVISION	123456789		
DATE	29-06-2017	PLAN N°	
DESSIN	Antonio F.	FORMAT	A-2
ECHELLE	Store enrouleur avec coffre B-Box 85 manivelle coulisses U-402 Installation frontale Mécanisme: Manivelle Barre de charge: Slim 35 Tube Ø44mm		
1/1			